

# AMALIE

Better than it has to be®  
Since 1903



## HEAVY DUTY PROTECTION MOTOR OIL

Not all engines in the world get to enjoy tooling down the highway. For the ones cutting the grass, powering jobsite equipment or tackling other demanding work, **AMALIE Heavy Duty Mono-Grade Motor Oils** offer a wide range of essential performance characteristics. Consider them whenever an API SP, SN Plus, SN, SM, SL, or SJ engine oil is recommended. They may also be used for gear or hydraulic applications where the OEM has recommended the use of a straight weight detergent oil. If your reputation is built on work that's better than it needs to be, make sure your oil is, too...with **AMALIE Heavy Duty Mono-Grade Motor Oils**.

### Features:

- API SP/CF
- SAE 50 SN PLUS, SN/CF

### FACTS 'n' FRICTION

The first practical gas-fueled internal combustion engine was built by the Belgian engineer Étienne Lenoir in 1860. Unfortunately, his design suffered from a low power output and high fuel consumption, two issues AMALIE Oil technology helps minimize today.

MADE IN U.S.A.



## HEAVY DUTY

VISCOSITY	PACK SIZE	PART #
30	12-1 Quart	160-61036-56
	4-1 Gallon	160-61037-36
	55 Gallon	160-61033-05
40	12-1 Quart	160-61046-56
	4-1 Gallon	160-61047-36
	3-2.5 Gallon	160-61041-26
	5 Gallon	160-61044-25
50 SN PLUS/SN	55 Gallon	160-61043-05
	12-1 Quart	160-61056-56
	4-1 Gallon	160-61057-36
	5 Gallon	160-61054-25
	55 Gallon	160-61053-05

Always refer to your vehicles operating manual to select the correct grade of oil for your engine. The data presented herein are believed to be accurate; however, Amalie Oil Company shall not be liable for its content and makes no warranty with respect thereto.





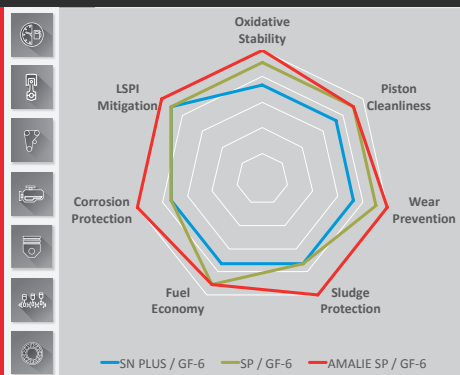
# ADVANCED ENGINES REQUIRE ADVANCED MOTOR OILS.

API SP/ILSAC GF-6 is a significant category upgrade. AMALIE Motor Oils have been tried and tested against 7 new tests to ensure modern and next generation engines are protected so that they can perform to their full potential.

For the first time ever, the ILSAC category is split into two:

## 7 NEW TESTS

- Fuel Economy GF-6A/GF-6B
- LSPI
- Chain Wear
- Sludge/Varnish
- Oxidation/Deposits
- Wear
- Corrosion



### ILSAC GF-6A

Replaces the ILSAC GF-5 specification and is represented by the starburst/certification trademark.



### ILSAC GF-6B

Provides further fuel economy benefits compared to ILSAC GF-6A and is defined for 0W-16 viscosity grade motor oils only.



Better than it has to be®  
Since 1903

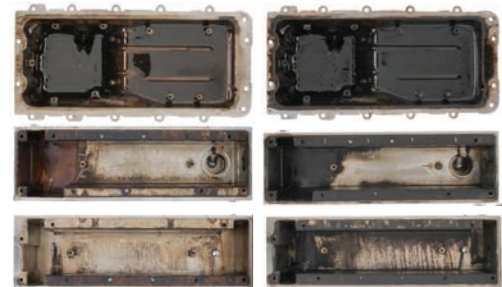
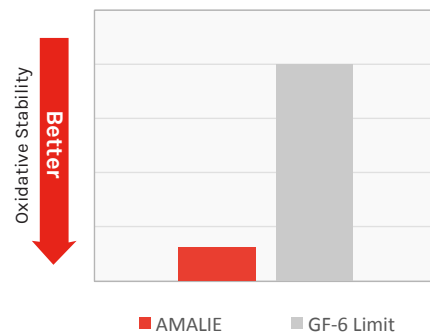
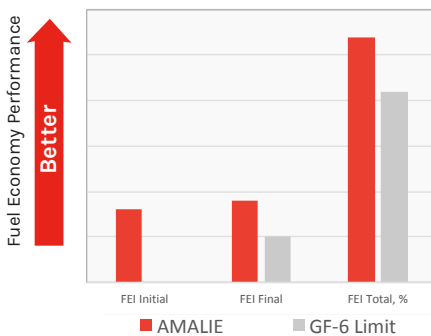


## AMALIE MOTOR OIL SP PRODUCT LINE

Built on the same proven and trusted approach to low speed pre-ignition (LSPI) protection AMALIE introduced in the 2017 API SN PLUS upgrade. In addition, API SP brings additional enhanced benefits in engine protection and ILSAC GF-6 enables better fuel economy performance.

Available in a full range of viscosity grades from mineral to synthetic, including GM dexos1™ Gen 2 and high mileage options.

## AMALIE MOTOR OILS – PROOF OF PERFORMANCE



AMALIE GF-6 Motor Oil Technology

Traditional GF-5 Motor Oil Technology

### Greater Vehicle Efficiency

AMALIE Motor Oils exceed the stringent requirements for fuel efficiency to ensure consumers continue to minimize consumption all the way to their next oil change.

### Reduced Oil Thickening

AMALIE Motor Oils resist thermal breakdown to protect the motor oil from thickening, allowing for oil to be pumped throughout the engine to ensure protection throughout the oil drain interval.

### Enhanced Engine Cleanliness

AMALIE Motor Oils maintain engine cleanliness to ensure critical engine and turbocharged GDI components operate as intended even in extreme operating conditions.



### Improved Wear Control

AMALIE Motor Oils mitigate catastrophic piston damage caused by LSPI and minimize engine wear to ensure efficient and reliable operation to help extend the useful life of the vehicle.



Better than it has to be®  
Since 1903

Please visit [AMALIE.com](http://AMALIE.com)  
or call 800-368-1264 for  
more information.